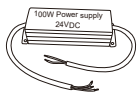


G2G EDGE

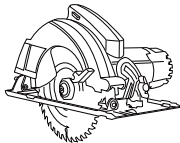
INSTALLATION GUIDE

Model	Cut Intervals
G2G Edge	3" / 4"

Installation Tools



Power Supply

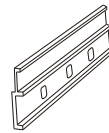


Miter Saw



Driller

Accessories



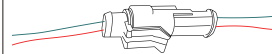
Aluminum Mounting Clip



End Cap



Corner Cover



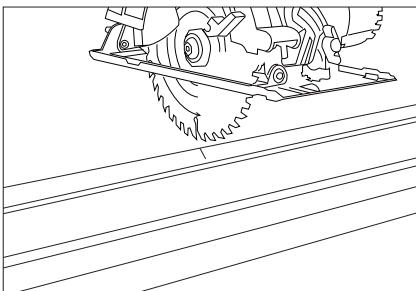
Waterproof Connector



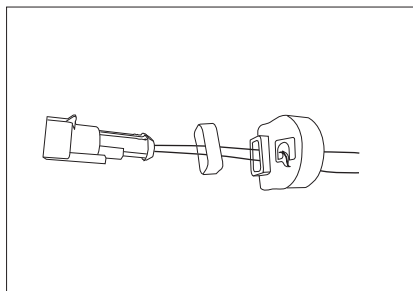
Silicone



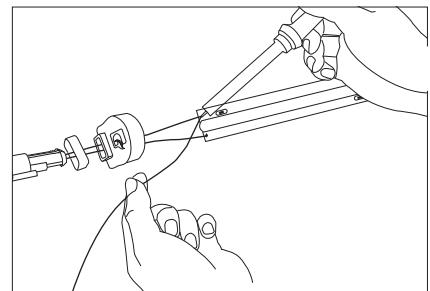
Screws



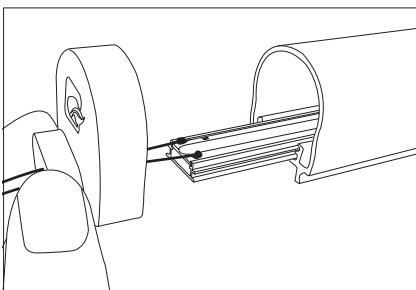
1. Cut G2G Edge following the cutting point. Use Miter Saw to ensure a 90° cut.



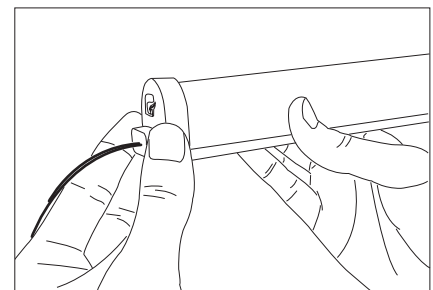
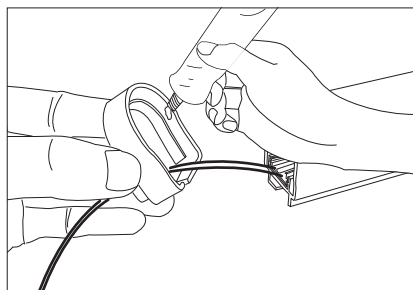
2. Thread the waterproof connector through the holes.



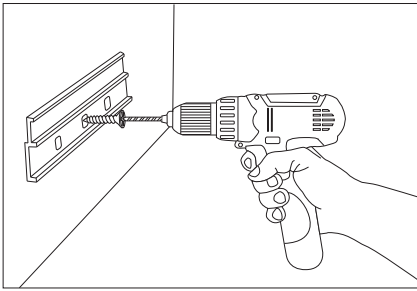
3. Solder the waterproof connector to the COB board.



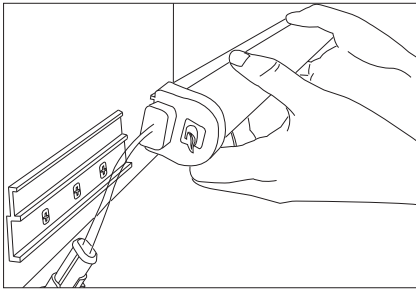
4. Apply silicone to the end cap and install. Same application on the other end.



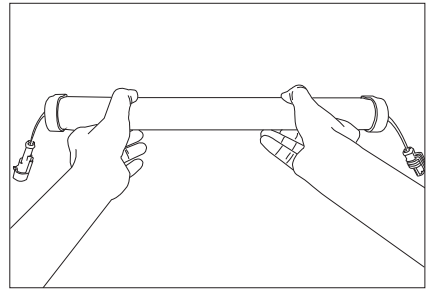
5. Plug the end cap to Edge.



6. Drill holes and install aluminum mounting clip.



7. Install G2G Edge from top to bottom.



8. Make sure to hold Edge on both ends.